



1141 Princess Highway Killarney VIC

4 1 7

With the original build of this stunning Edwardian Homestead over 100 years old and only ever been within two family's stewardship, the rarity of an occasion to acquire a 10 acre property like this speaks for itself.

The opportunity has arisen for a special someone to claim their new lifestyle home in Killarney. Loved and cherished for years on end, this family home has been restored to its crowning glory. Walking through the front door a certain buyer will fall in love with the high ceilings, wide entrance hall, bright and light open spaces and the feel of utter class.

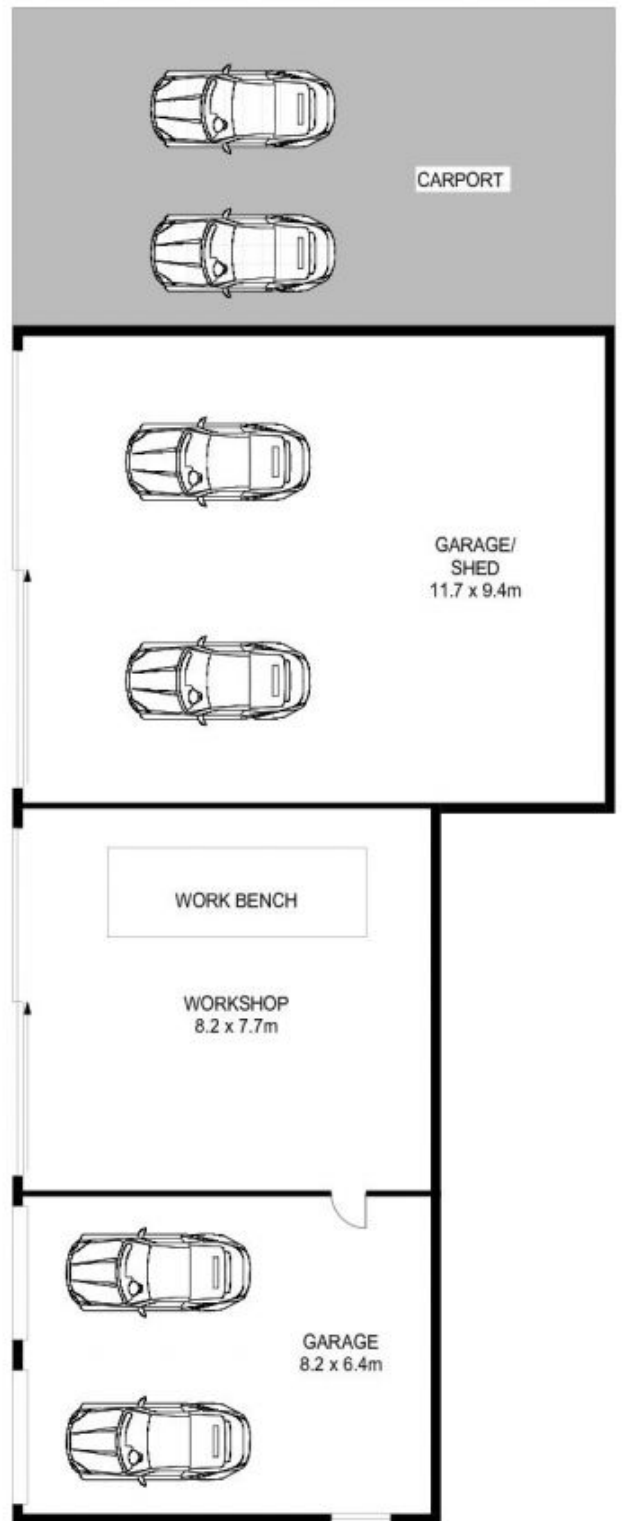
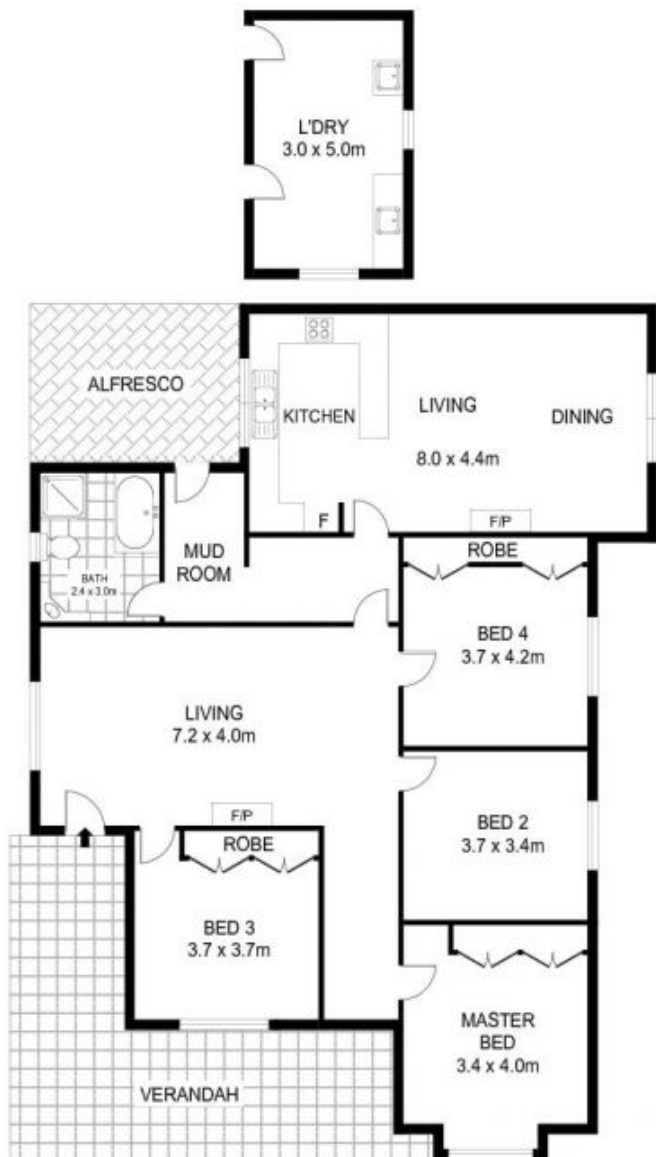
Comprising of four large traditional bedrooms, a central living area with second entrance and fireplace, fresh and contemporary kitchen with dining and second living space this property will suit buyers both young and old. The rear entrance with foyer is the perfect spot to take off your boots

Land Size : 10 Acres

View : <https://www.lukewilliamsrealestate.com.au/sale/vic/warrnambool-port-fairy/killarney/residential/house/5700960>



Luke Williams
0438 305 533



Scale in metres. Indicative only. Dimensions are approximate. All information contained herein is gathered from sources we believe to be reliable. However we cannot guarantee its accuracy and interested persons should rely on their own enquiries.

1141 Princess Highway, Killarney