



3 Newfield Place Warrnambool VIC

3 2 2

This stunning townhouse comes with everything the modern day buyer wants plus something a little special. 3 Newfield Place is currently rented at a mind blowing \$650 per week. The tenants are expected to stay on for another three months and potentially sign another lease ongoing.

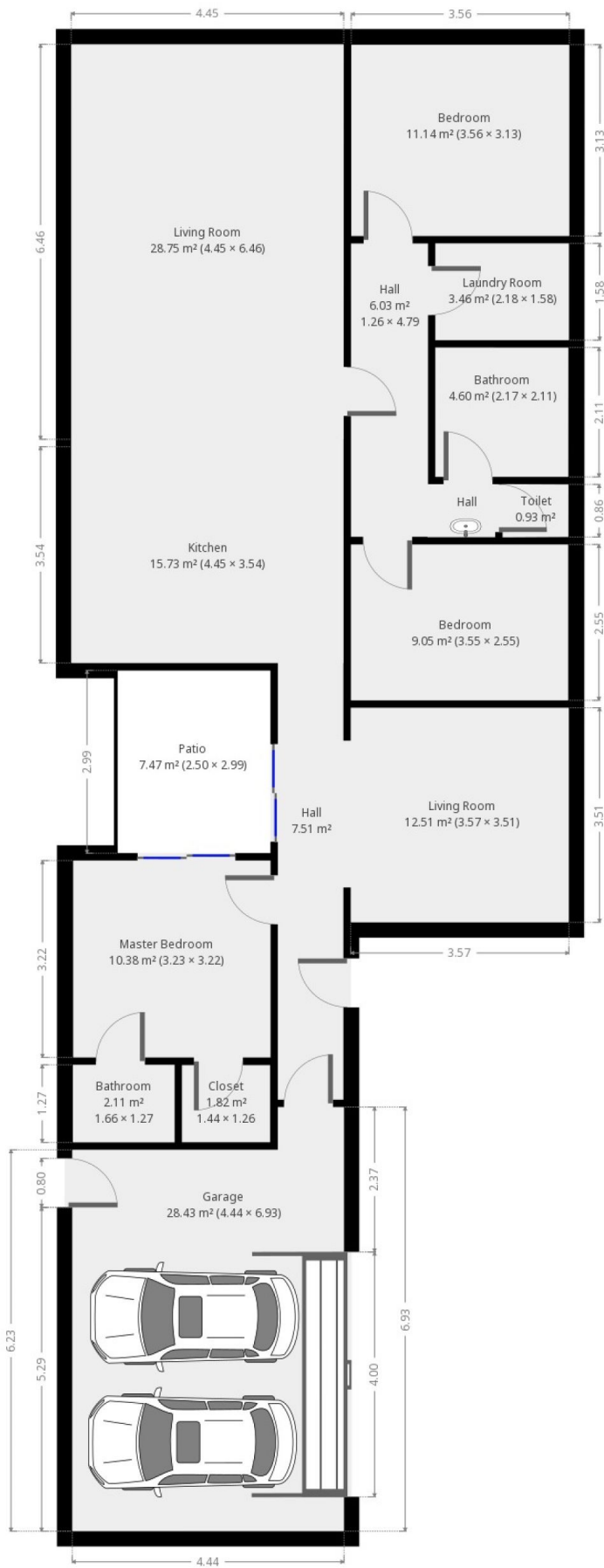
This top quality home is finished well from front to back and your first impression will be a pleasant one. We tick plenty of boxes here of what people are looking for including having two living areas, a separated master bedroom and ensuite from the other bedrooms and also the fact it's private and low maintenance.

The property is an excellent size to fit the 429m2 approx block. It runs East/West which exposes the living areas and impressive outdoor entertaining area to the North, which is what we like in Warrnambool. Although the house is large and the block is relatively small, it balances well when it comes to storage and yard space. The build has been

Price : \$ 408,000
Land Size : 429 sqm
View : <https://www.lukewilliamsrealestate.com.au/sale/vic/warrnambool-port-fairy/warrnambool-residential/house/5701003>



Luke Williams
0438 305 533



THIS FLOORPLAN IS PROVIDED WITHOUT WARRANTY OF ANY KIND. SENSOPIA DISCLAIMS ANY WARRANTY INCLUDING, WITHOUT LIMITATION, SATISFACTORY QUALITY OR ACCURACY OF DIMENSIONS.