



Luke Williams
real estate



1/9 Donaldson Drive Warrnambool VIC

2 **1** **1**

This property is as straight forward as it gets. A well cared for brick unit located in a position that is always in high demand. Donaldson Drive is a hidden little spot within a few minutes walk to Aquazone, the Botanical Gardens, St Josephs Primary School and Emmanuel College.

On entering the home, you are greeted by a large open living/kitchen area. The two bedrooms with BIRs are located off on a wing along with the bathroom. The home has been well maintained throughout and had some renovations done as required. There is quite new carpet in the living area and bedrooms as well as recently installed floating floorboards in the kitchen, laundry and toilet.

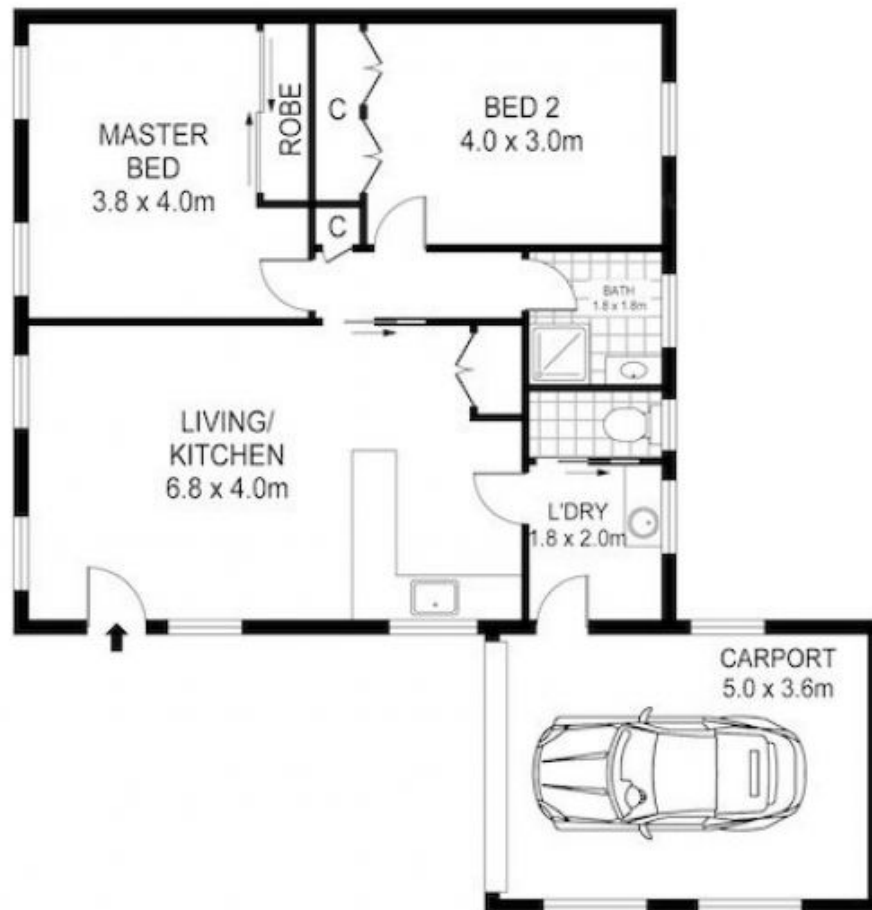
There is a good sized private backyard which has a garden shed with concreted floor. The single carport with roller door opens out into the backyard and is a good size. The

Price : \$ 250,000
Land Size : 321 sqm
View : <https://www.lukewilliamsrealestate.com.au/sale/vic/warrnambool-port-fairy/warrnambool/residential/unit/5701004>



Luke Williams
0438 305 533

<https://www.lukewilliamsrealestate.com.au>



Scale in metres. Indicative only. Dimensions are approximate. All information contained herein is gathered from sources we believe to be reliable. However we cannot guarantee its accuracy and interested persons should rely on their own enquiries.

1/9 Donaldson Drive Warrnambool