



6 Napier Place Warrnambool VIC

3 2 2

This simply is a must see. If you're considering a stylish, modern townhouse, then this is the answer. Not only is 6 Napier Place low maintenance and easy living but it's also quite sizeable. It really packs a whole lot of value into a neat footprint.

Featuring three generous bedrooms, two bathrooms and also two living areas, there's a lot to love. The main living area is incorporated with the kitchen and dining area, this is one of the first impressions you'll be greeted with. On entering this area, it opens up beautifully and you're every chance you'll want to buy it instantly. The kitchen includes gas cook top, dishwasher and great quality cabinetry. A small enclosed yard with established bamboo frames this area like a painting, it's a really wonderful area to experience.

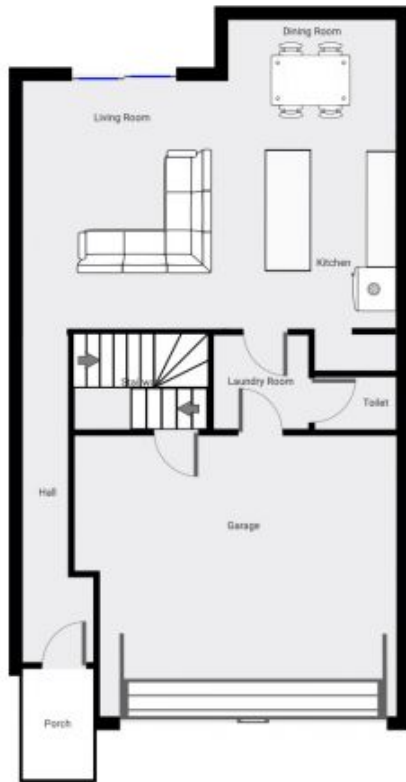
The bottom floor consists of the kitchen, living and dining areas as well as a double garage, laundry and separate

Price : \$ 580,000
Land Size : 205 sqm
View : <https://www.lukewilliamsrealestate.com.au/sale/vic/warrnambool-port-fairy/warrnambool-residential/house/6836938>



Luke Williams
0438 305 533

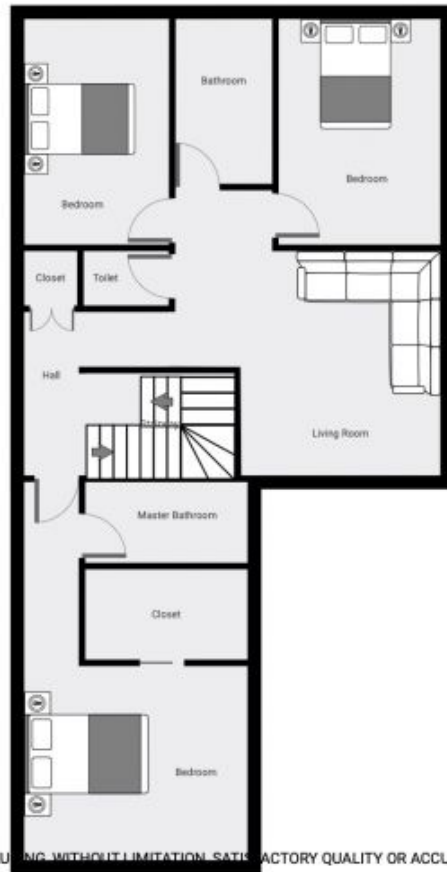
▼ Ground Floor



ROOMS: 3

▼ 1st Floor

ROOMS: 4



THIS FLOORPLAN IS PROVIDED WITHOUT WARRANTY OF ANY KIND. SENSOPIA DISCLAIMS ANY WARRANTY INCLUDING, WITHOUT LIMITATION, SATISFACTORY QUALITY OR ACCURACY OF DIMENSIONS.