



614 Princes Highway Illowa VIC

4 2 6

This Keegan built home, set on approximately five acres is designed for people who love to entertain and offers an exceptional lifestyle with generous spaces. Located minutes from Warrnambool, Port Fairy and Koroit, properties like this are ever so rare.

Price : \$ 1,300,000
Land Size : 5 Acres
View : <https://www.lukewilliamsrealestate.com.au/sale/vic/warrnambool-port-fairy/illowa/residential/rural/6859315>

Every benchmark is met in this home, with the master suite including a walk in robe and an oversized ensuite with quality cabinetry, stone benchtops, shower, with a basin for him and her. The remaining three bedrooms are generously portioned and include built-in-robos, ceiling fans for those warm summer nights and are serviced by the main bathroom, featuring a shower, a classy spa bath, accompanied by stone bench tops.

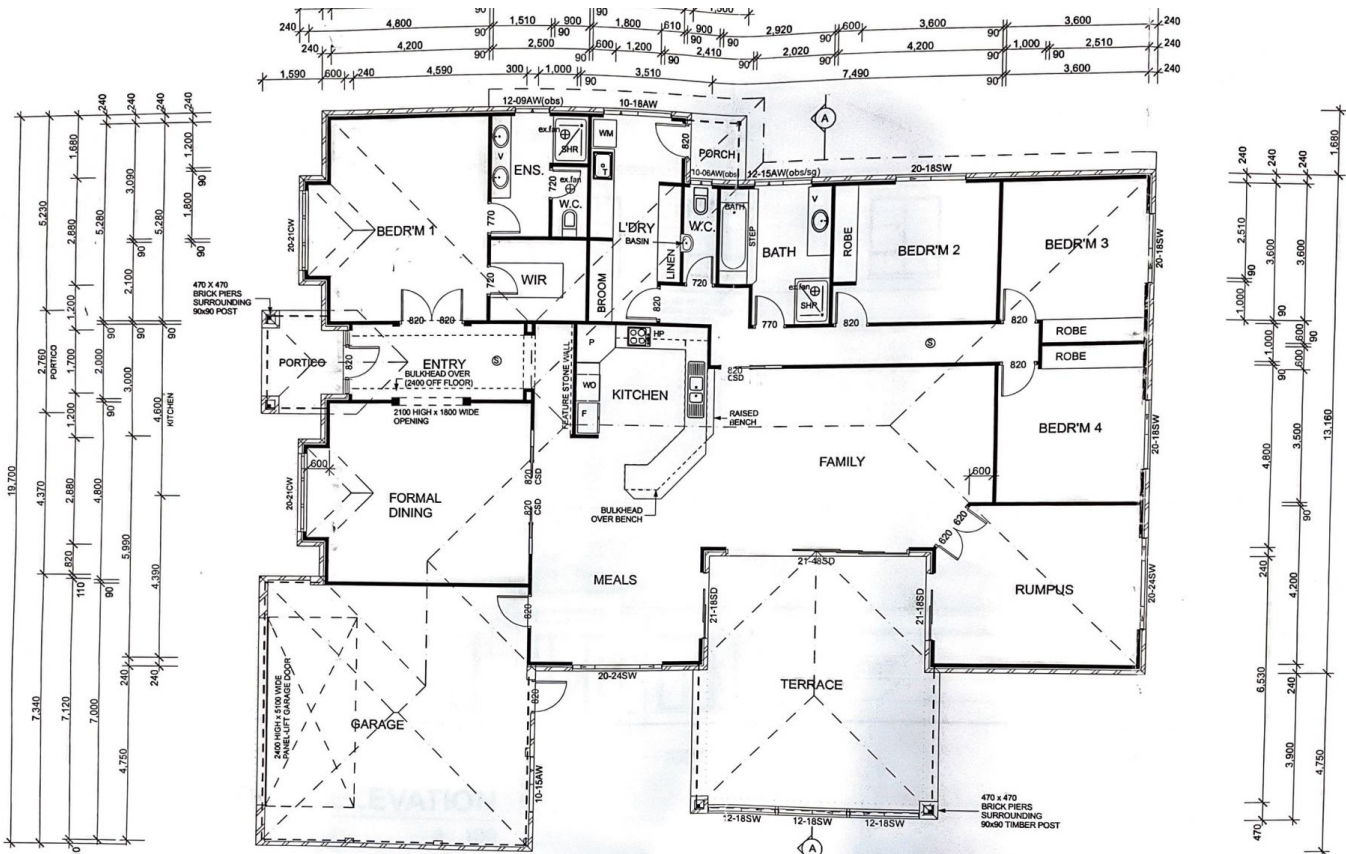
The lounge, features a gas-log fireplace and leads seamlessly into the open plan kitchen and dining area. This



Dominic Bushell
0488 905 293



Luke Williams
0438 305 533



FLOOR PLAN
1 : 100

AREAS: RESIDENCE - 274.7m²
 GARAGE - 52.9m² PORTICO - 5.4m²
 TERRACE - 42.9m² PORCH - 2.5m²

SHEET NO 2 OF 6 JOB NO 06-082