



**24 Hoddle Street Warrnambool VIC**

3 1 2

This inviting three-bedroom home is a perfect choice for anyone seeking a new beginning in a property they can truly make their own or as a steady investment. From its cosy, character-filled design to its modern upgrades and thoughtful features, this home offers a wonderful starting point for your journey into homeownership.

**Price** : \$ 436,100  
**Land Size** : 585 sqm  
**View** : <https://www.lukewilliamsrealestate.com.au/sale/vic/warrnambool-port-fairy/warrnambool-residential/house/7800442>

Embrace the outdoors with an undercover entertaining area, overlooking the backyard, perfect for family and guests. A double garage provides secure parking and ample space for storage, ensuring both convenience and peace of mind.

The low-maintenance gardens are designed for easy upkeep, allowing you to enjoy the outdoor spaces without the hassle of extensive maintenance.

Nestled on a generous 585m2 block (approx.), this home



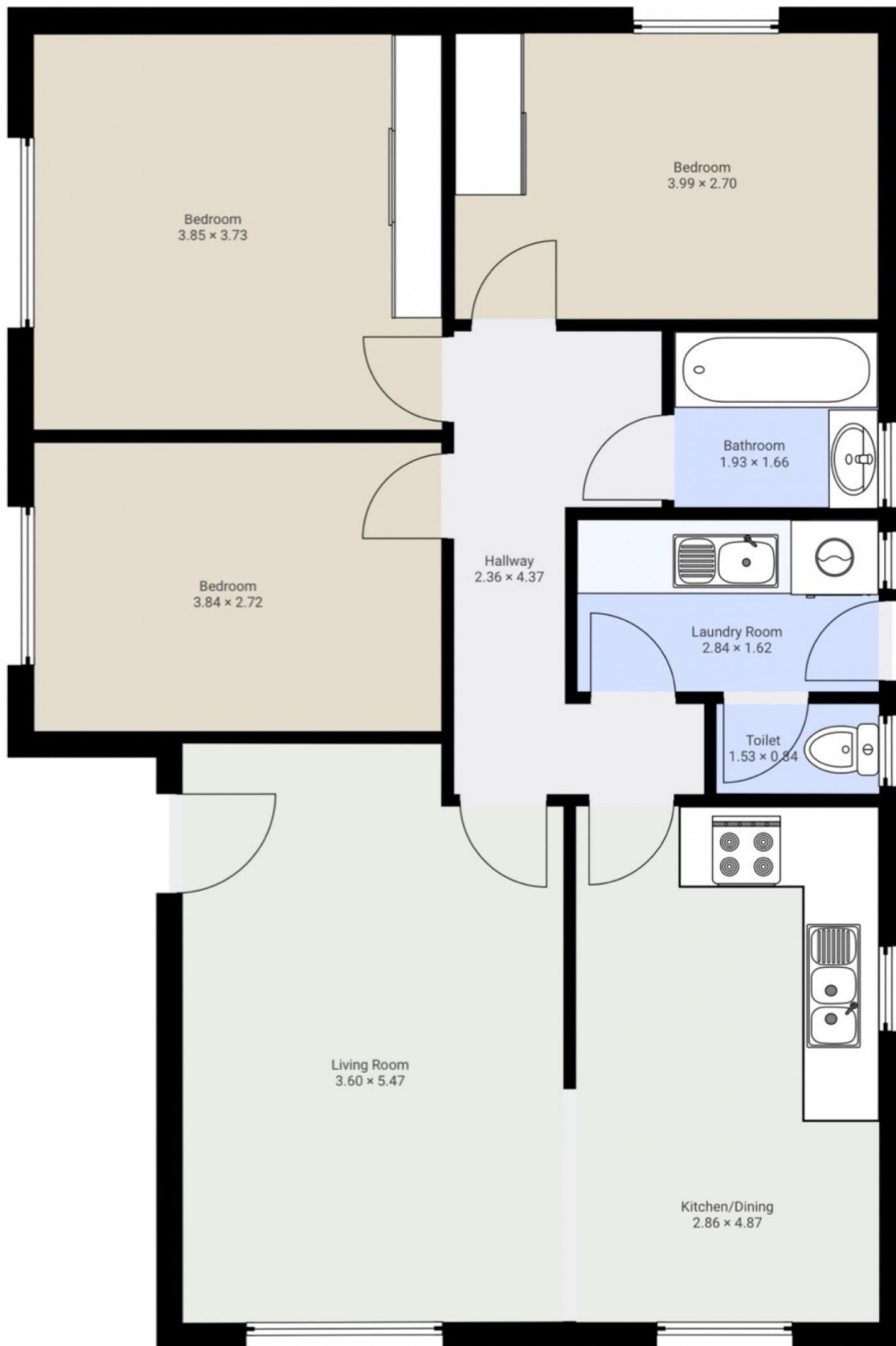
**Dominic Bushell**  
0488 905 293

# 24 Hoddle Street, Warrnambool

24 Hoddle Street, Warrnambool  
FLOORS: 1

The measurements provided in this real estate floor plan are intended to serve as a general guide and for marketing purposes only. While every effort has been made to ensure accuracy, these measurements are not intended to be relied upon for any purpose, and should not be considered a guarantee of precise dimensions or square footage.

## ▼ Ground Floor



**Luke Williams**  
real estate