



LukeWilliams
real estate

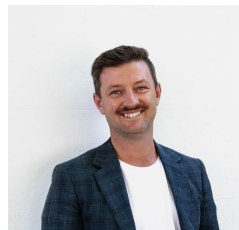


11 Benson Drive Warrnambool VIC

This superbly located block is prime for a build to encapsulate some mega views. From the street you look out towards a big bend in the Merri River swell as the skyline of central Warrnambool. The 400m2 approx. parcel slightly falls from front to back which gives the opportunity to create a memorable split living type home.

At the super affordable pricing, this is a block you need to secure quickly and start planning out your ideal home immediately. Titled and ready to go, 11 Benson Drive is the one.

Price : \$200,000-\$220,000
Land Size : 400 sqm
View : <https://www.lukewilliamsrealestate.com.au/sale/vic/warrnambool-port-fairy/warrnambool/residential/land/7954670>



Luke Williams
0438 305 533



Rihanna MacDonald
0490 078 647