



13 Kalan Way Warrnambool VIC

3 2 2

Set in the ever-popular Riverland Estate, this beautifully presented home offers the perfect blend of style, and comfort ideal for families, first-home buyers, downsizers, or investors alike.

Step inside and discover a thoughtfully designed layout featuring three spacious bedrooms, each with built-in robes. The main suite is a true retreat, complete with a walk-in robe and a private ensuite, providing the perfect place to unwind at the end of the day. The heart of the home is a stylish open-plan kitchen and dining area, seamlessly flowing into a separate lounge perfect for relaxing or entertaining.

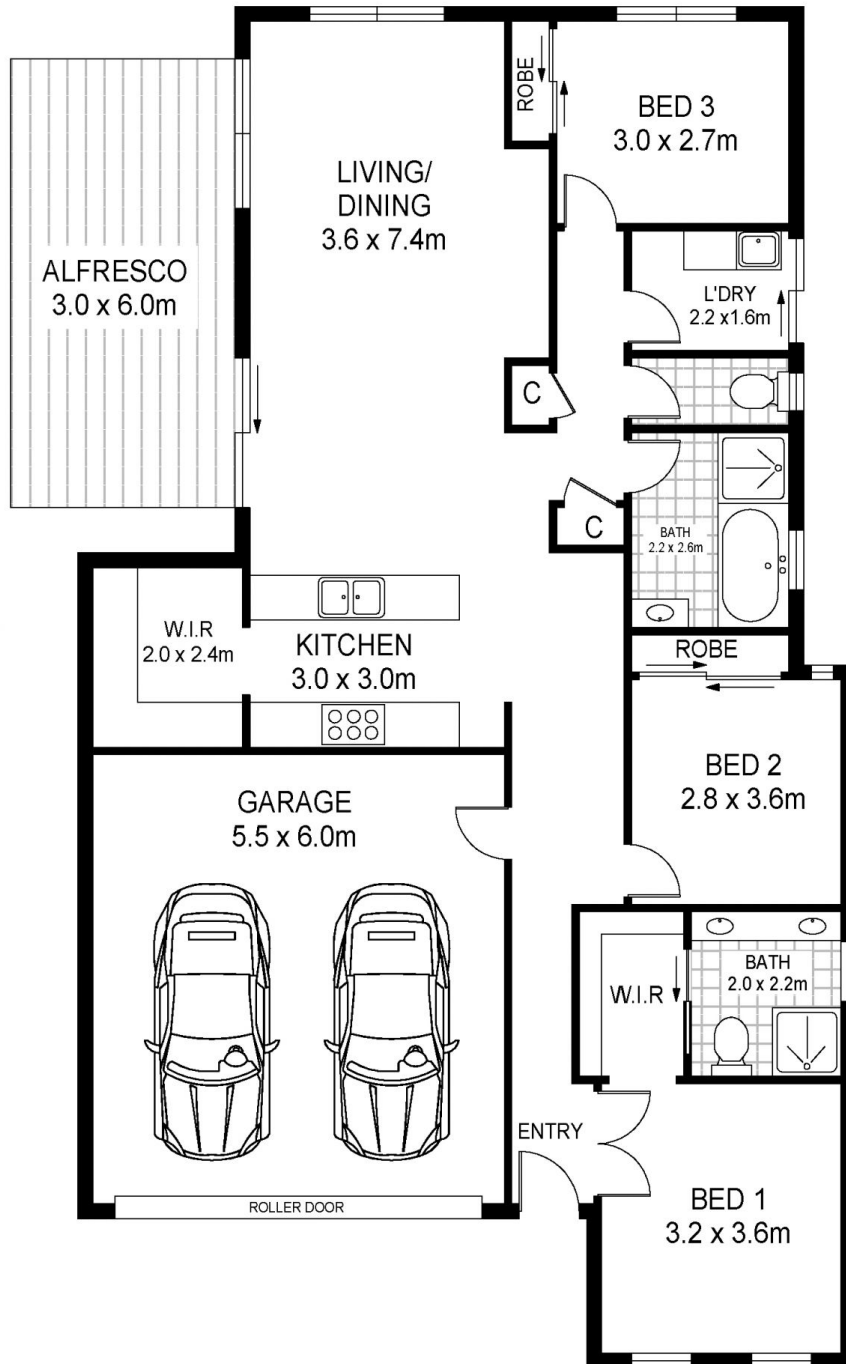
The contemporary kitchen is sure to impress the home

Type : House
Land Size : 466 sqm
View : <https://www.lukewilliamsrealestate.com.au/8440740>



Dominic Bushell
0488 905 293

[For full version visit the website](https://www.lukewilliamsrealestate.com.au)



Scale in metres. Indicative only. Dimensions are approximate. All information contained herein is gathered from sources we believe to be reliable. However we cannot guarantee its accuracy and interested persons should rely on their own enquiries

13 Kalan Way, Warrnambool